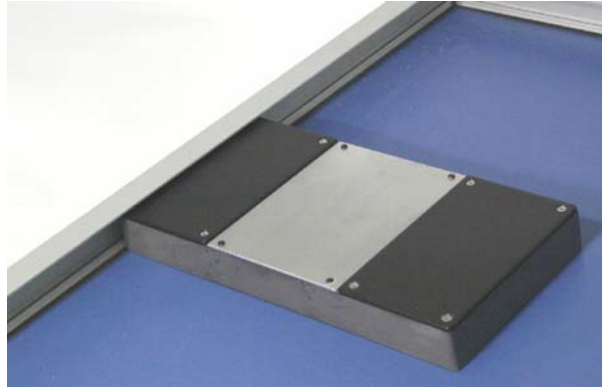


PV AC Module Photovoltaic Panel Inverter



A PV AC module is a self-contained, UL-1741 compliant inverter that produces clean, sine-wave electricity for grid-tie applications without the complexity or expense common in large-inverter-based systems.

Advantages Over Conventional Grid-Tie Systems 50% reduction in wiring requirements! This eliminates: DC wiring DC cable trays DC fusing, overcurrent protection and required holders DC connectors DC ground-fault detection, protection, and devices DC surge protection DC combiner boxes DC junction boxes and connector blocks UL-related DC cabling issues PV Series (“blocking”) diodes PV module bypass diodes

The PV AC Module is mounted to a PV panel. All DC wiring is enclosed in the compartment near the PV frame. The inverter is mounted in the center compartment. AC wiring is located in the right-hand compartment. (Conduit and fittings not shown are customer/installer provided).

Additional Benefits of PV AC Modules: No batteries to purchase, maintain, or wear out! More reliable -single point failure does not disable entire system! Simplified system assembly -AC wiring connects directly to AC sub-panel with appropriate breaker! Incremental growth capability - no need to purchase many expensive modules at one time. Minimizes system design time and expense. Significantly decreases system power reduction events due to single-module shading. No large or heavy inverters to ship, handle, or mount. Easy to install and service - PV panel and inverter are integrated into one unit. No imbalance losses due to differences in PV output voltage or current. Anti-islanding protection built into every module (per UL1741). Microprocessor-controlled Maximum Power Point Tracking (MPPT) operates over entire DC input voltage range. Adaptable: J-box or Multi-contact connector input. Knock-outs for standard AC-side conduit fittings.

Electrical Specifications Total Harmonic Distortion (THD): < 2% Peak Efficiency: Greater than 91% Rated Power: Up to 150W output per module Input: “12V” PV (15-24V) or “24V” PV (30-48V) MPPT voltage range: Full DC input voltage range Output: 117VAC, 60 Hz (nominal)

Mechanical Specifications Size (in/mm): 1.3” h x 12.5” w x 6.25” d (33mm x 318mm x 159mm) Weight: Less than 2.5 lbs (1135 grams) Operating Temperature: -40°C (-40°F) to +85°C (+185°F)

Certifications Designed to meet:

UL 1741

FCC Class B

NEC 690

The logo for EXELTECH, featuring the word "EXELTECH" in a bold, blue, sans-serif font. The letters "E", "X", and "T" are significantly larger and more prominent than the other letters, creating a stylized, dynamic appearance.

jimgray@jimdgrayassoc.com

www.jimdgrayassoc.com