

Cable entry cabinets

Please note:
Top and bottom sealing plates must be ordered separately.

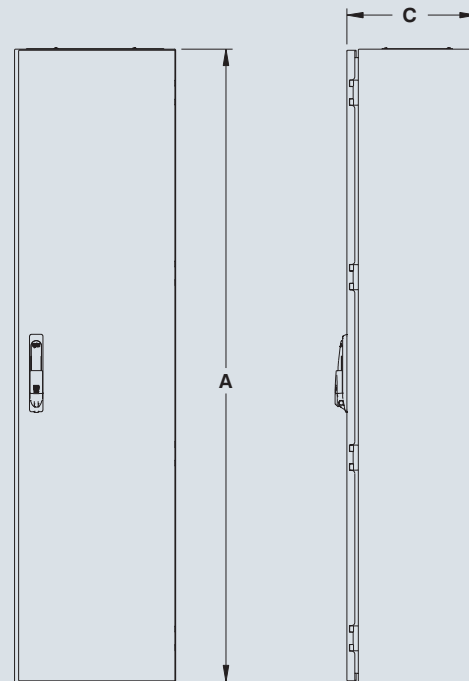
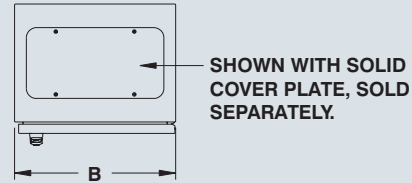
Visit www.jimdgray.com for details.

Call us @ 1-972-699-9976

The 6500 MXCE cabinets are used to facilitate cable entry into the side of a modular cabinet system. They are made from steel or stainless steel and have an open top and bottom to provide cable

access. Optional closing plates are available to seal the top and bottom (see next page). A door is supplied with the cabinet to seal its open side. This door features a padlockable key

lock handle. Cable entry cabinets are finished with heat fused polyester powder, electrostatically applied on a phosphatized base. Finish is RAL 7035 textured grey.



CATALOG NUMBER	NOMINAL		DIMENSIONS		
	H	D	A	B	C
6500 MXCE0706	700	600	710	610	330
6500 MXCE1404	1400	400	1410	410	330
6500 MXCE1405	1400	500	1410	510	330
6500 MXCE1406	1400	600	1410	610	330
6500 MXCE1408	1400	800	1410	810	330
6500 MXCE1604	1600	400	1610	410	330
6500 MXCE1605	1600	500	1610	510	330
6500 MXCE1606	1600	600	1610	610	330
6500 MXCE1608	1600	800	1610	810	330
6500 MXCE1804	1800	400	1810	410	330
6500 MXCE1805	1800	500	1810	510	330

CATALOG NUMBER	NOMINAL		DIMENSIONS		
	H	D	A	B	C
6500 MXCE1806	1800	600	1810	610	330
6500 MXCE1808	1800	800	1810	810	330
6500 MXCE2004	2000	400	2010	410	330
6500 MXCE2005	2000	500	2010	510	330
6500 MXCE2006	2000	600	2010	610	330
6500 MXCE2008	2000	800	2010	810	330
6500 MXCE2009	2000	900	2010	910	330
6500 MXCE2205	2200	500	2210	510	330
6500 MXCE2206	2200	600	2210	610	330
6500 MXCE2208	2200	800	2210	810	330
6500 MXCE2209	2200	900	2210	910	330

ADD SUFFIX 'SS' FOR BRUSHED STAINLESS STEEL

ADD SUFFIX 'SSP' FOR POWDER COATED STAINLESS STEEL

NOT AVAILABLE WITH EMI/RFI SHIELDING

Data subject to change without notice.

Suggested Accessories



p.62



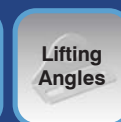
p.64



p.64



p.66



p.73



p.83

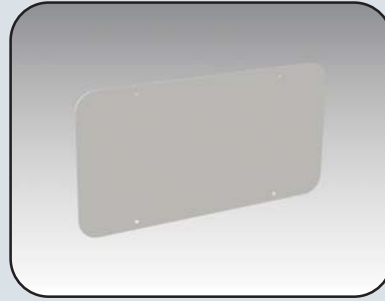


p.384

NEMA 12-13 MTRX CABINETS

Solid closure plate

The **6500 MXCESP** solid closure plates are used to seal the top and bottom of a cable entry cabinet. They are made of steel and are finished with RAL 7035 textured grey powder coating.

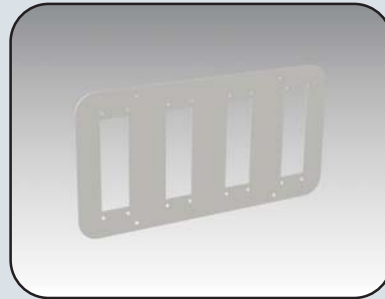


CATALOG NUMBER	FITS CABLE ENTRY CABINETS WITH A DEPTH OF
6500 MXCESP04	400mm
6500 MXCESP05	500mm
6500 MXCESP06	600mm
6500 MXCESP08	800mm
6500 MXCESP09	900mm

Please note: Closure plates can also be used with 6500 MXBP perforated barriers.

Closure plate with DIN cut-out

The **6500 MXCEDP** closure plates with DIN cut-outs are used to seal the top and bottom of a cable entry cabinet. The 24-pin cut-outs can be sealed or adapted using the adaptors below. They are made of steel and are finished with RAL 7035 textured grey powder coating.



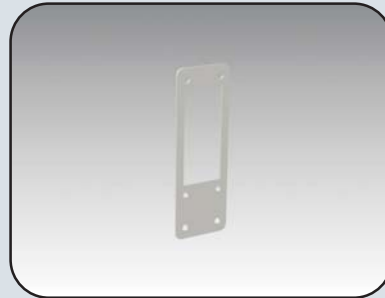
CATALOG NUMBER	FITS CABLE ENTRY CABINETS WITH A DEPTH OF
6500 MXCEDP04	400mm
6500 MXCEDP05	500mm
6500 MXCEDP06	600mm
6500 MXCEDP08	800mm
6500 MXCEDP09	900mm

Visit www.eurobex.com for details.

Call us toll free 1-800-363-2423

Closure plate adapters

The **6500 MXCEAP** are used with 6500 MXCEDP cable entry closing plates to seal unused cut-outs or to adapt to different cut-out sizes. They are made of steel and are finished with RAL 7035 textured grey powder coating.



CATALOG NUMBER	ADAPTS FROM 24 PIN CUT-OUT TO
6500 MXCEAP00	Blank cover
6500 MXCEAP16	16 pin cut-out
6500 MXCEAP10	10 pin cut-out
6500 MXCEAP06	6 pin cut-out

Base plinths for cable entry cabinets

The **6500 MXCEPL** are installed under cable entry cabinets. They are made of steel.

The 6500 MXCEPL consists of four plinth blocks, four plinth panels and all installation hardware. The plinths are finished with heat fused polyester powder. The finish is RAL7011 sandtex dark grey.



CATALOG NUMBER	FITS CABLE ENTRY CABINETS WITH A DEPTH OF
6500 MXCEPL04	400mm
6500 MXCEPL05	500mm
6500 MXCEPL06	600mm
6500 MXCEPL08	800mm
6500 MXCEPL09	900mm

Data subject to change without notice.

Cable entry top hats

Please note:
All sealing plates are included.

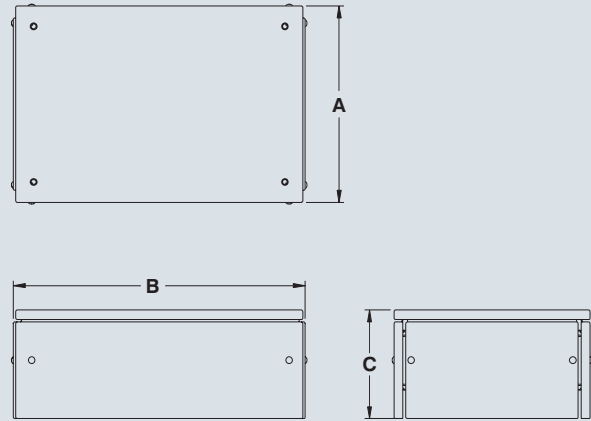
Visit www.eurobex.com for details.

Call us toll free 1-800-363-2423

The 6500 MXCET top hats are used to facilitate cable entry into the side of a modular cabinet system. They are made of steel or stainless steel and have an open sides to provide cable access.

The four side panels, the top panel and the bottom dividing panel are included. All the required installation hardware is supplied. Cable entry cabinets are finished with heat fused poly-

ester powder, electrostatically applied on a phosphatized base. Finish is RAL 7035 textured grey. **Eyebolts cannot be installed on cabinets with cable entry top hats.**



Custom cable entry top hats for ganged cabinet rows are also available. Contact your sales representative for details.

CATALOG NUMBER	NOMINAL		DIMENSIONS		
	W	D	A	B	C
6500 MXCET0404	400	400	410	410	227
6500 MXCET0405	400	500	410	510	227
6500 MXCET0406	400	600	410	610	227
6500 MXCET0408	400	800	410	810	227
6500 MXCET0604	600	400	610	410	227
6500 MXCET0605	600	500	610	510	227
6500 MXCET0606	600	600	610	610	227
6500 MXCET0608	600	800	610	810	227
6500 MXCET0706	700	600	710	610	227
6500 MXCET0708	700	800	710	810	227
6500 MXCET0709	700	900	710	910	227
6500 MXCET0804	800	400	810	410	227
6500 MXCET0805	800	500	810	510	227
6500 MXCET0806	800	600	810	610	227
6500 MXCET0808	800	800	810	810	227

CATALOG NUMBER	NOMINAL		DIMENSIONS		
	W	D	A	B	C
6500 MXCET0809	800	900	810	910	227
6500 MXCET1004	1000	400	1010	410	227
6500 MXCET1005	1000	500	1010	510	227
6500 MXCET1006	1000	600	1010	610	227
6500 MXCET1008	1000	800	1010	810	227
6500 MXCET1204	1200	400	1210	410	227
6500 MXCET1205	1200	500	1210	510	227
6500 MXCET1206	1200	600	1210	610	227
6500 MXCET1208	1200	800	1210	810	227
6500 MXCET1604	1600	400	1610	410	227
6500 MXCET1605	1600	500	1610	510	227
6500 MXCET1606	1600	600	1610	610	227
6500 MXCET1608	1600	800	1610	810	227
6500 MXCET1805	1800	500	1810	510	227
6500 MXCET1806	1800	600	1810	610	227

ADD SUFFIX 'SS' FOR BRUSHED STAINLESS STEEL

ADD SUFFIX 'SSP' FOR POWDER COATED STAINLESS STEEL

NOT AVAILABLE WITH EMI/RFI SHIELDING

Data subject to change without notice.