

**Oil and dust tight lay-in wireway**

- Quick Features :**
- Seamless welding
  - Poured gasket
  - Draw pull catches
  - Complete system
  - Easy installation
  - Powder coating

The 1500 series oil tight lay-in wireway is a complete system designed to permit fast and easy installation of multiple wire runs. All sections and accessories have one side completely open, permitting the lay-in of wires without the "pull through" problem. The troughs are screw-on and are made of 14 GA steel with end

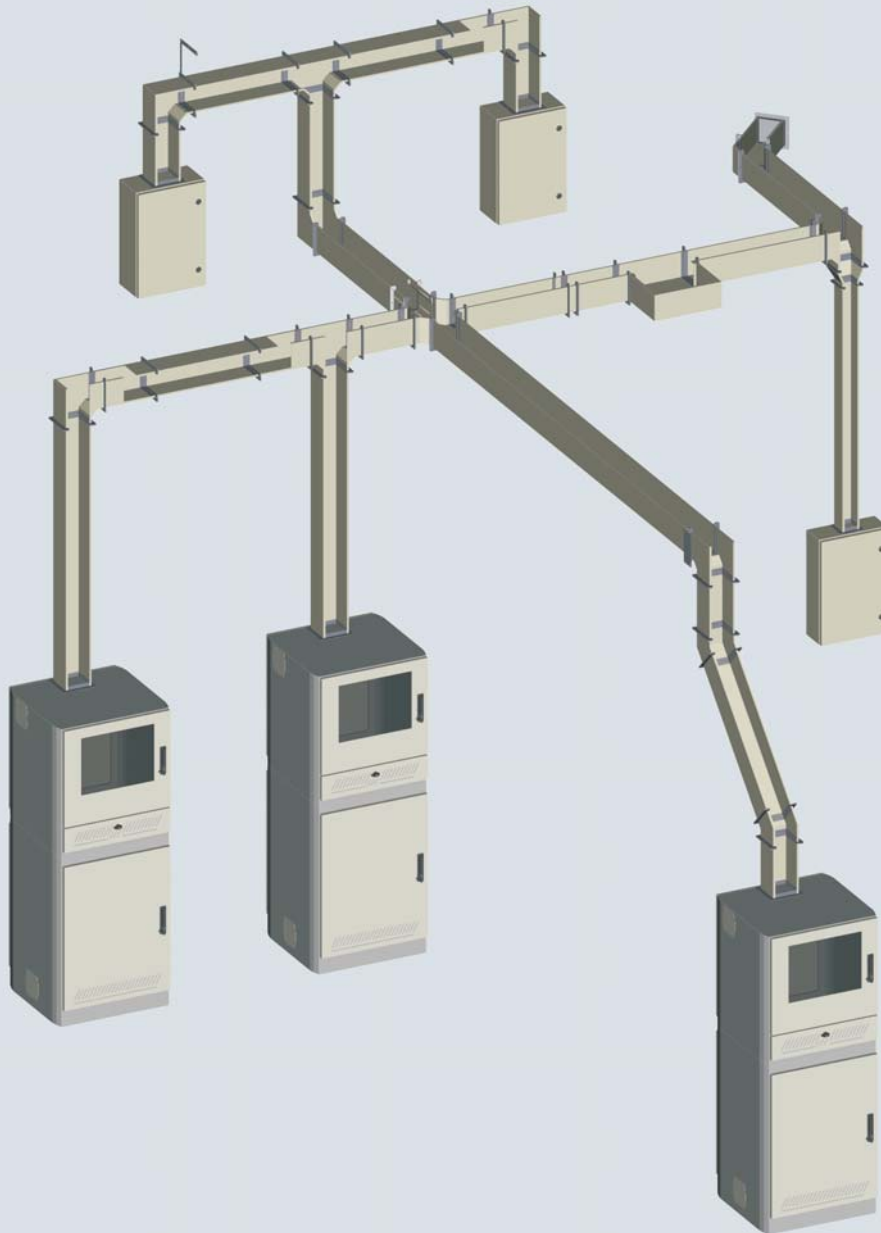
flanges. All seams have been continuously welded. Covers are hinged and tight closing is assured by several quick release draw pull catches. The bolted flanges allow for minor length adjustments. A high quality seamless poured in place gasket is installed between the door and the trough and between the sec-

tions and the accessories to ensure integrity. Components are finished with heat fused polyester powder, electrostatically applied on a phosphatized base. Finish is ANSI/ASA 61 gray. **CSA Certified NEMA 12-13 / IP65**



Visit [www.jimdgray.com](http://www.jimdgray.com) for details.

Call us 1-972-699-9976



Data subject to change without notice.

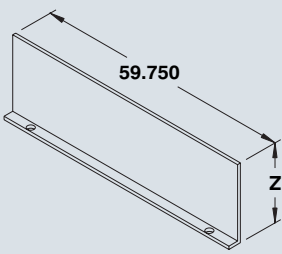
# NEMA 12-13 LAY-IN WIREWAY

# 1500 DUCTS

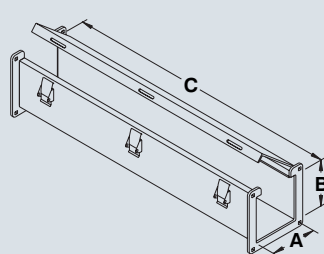


Oil and dust tight lay-in wireway

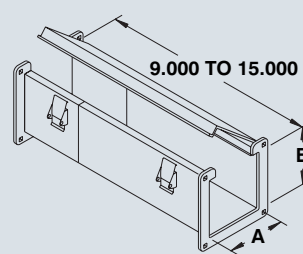
DESCRIPTION	JOINER PLATES QTY.	CATALOG NUMBER				
		2 1/2" X 2 1/2"	4" X 4"	6" X 6"	8" X 8"	12" X 6"
Straight sections 6"	1	1500 SS2006	1500 SS4006	1500 SS6006	1500 SS8006	1500 SS12006
Straight sections 12"	1	1500 SS2012	1500 SS4012	1500 SS6012	1500 SS8012	1500 SS12012
Straight sections 24"	1	1500 SS2024	1500 SS4024	1500 SS6024	1500 SS8024	1500 SS12024
Straight sections 36"	1	1500 SS2036	1500 SS4036	1500 SS6036	1500 SS8036	1500 SS12036
Straight sections 48"	1	1500 SS2048	1500 SS4048	1500 SS6048	1500 SS8048	1500 SS12048
Straight sections 60"	1	1500 SS2060	1500 SS4060	1500 SS6060	1500 SS8060	1500 SS12060
Straight sections 120"	1	1500 SS2120	1500 SS4120	1500 SS6120	1500 SS8120	1500 SS12120
Screw on barrier 60"	0	--	1500 BA4060	1500 BA6060	1500 BA8060	1500 BA12060
Cut off fitting	1	1500 CO2062	1500 CO4062	1500 CO6062	1500 CO8062	1500 CO12062
Nipple 1"	1	1500 NS2001	1500 NS4001	1500 NS6001	1500 NS8001	1500 NS12001
Nipple 2"	1	1500 NS2002	1500 NS4002	1500 NS6002	1500 NS8002	1500 NS12002
Nipple 3"	1	1500 NS2003	1500 NS4003	1500 NS6003	1500 NS8003	1500 NS12003
Telescope fitting	Special	1500 TL2068	1500 TL4068	1500 TL6068	1500 TL8068	1500 TL12068
Junction box	1	1500 JB2066	1500 JB4066	1500 JB6066	1500 JB8066	1500 JB12066
Elbow 90° top opening	1	1500 ET2090	1500 ET4090	1500 ET6090	1500 ET8090	1500 ET12090
Elbow 90° inside opening	1	1500 EI2091	1500 EI4091	1500 EI6091	1500 EI8091	1500 EI12091
Elbow 90° outside opening	1	1500 EO2092	1500 EO4092	1500 EO6092	1500 EO8092	1500 EO12092
Elbow 90° outside top opening	1	--	1500 OT4093	1500 OT6093	1500 OT8093	--
Elbow 45° top opening	1	1500 ET2045	1500 ET4045	1500 ET6045	1500 ET8045	1500 ET12045
Elbow 45° inside opening	1	1500 EI2046	1500 EI4046	1500 EI6046	1500 EI8046	1500 EI12046
Elbow 45° outside opening	1	1500 EO2047	1500 EO4047	1500 EO6047	1500 EO8047	1500 EO12047
Tee fitting top opening	2	1500 TT2063	1500 TT4063	1500 TT6063	1500 TT8063	1500 TT12063
Tee fitting outside opening	2	1500 TO2064	1500 TO4064	1500 TO6064	1500 TO8064	1500 TO12064
Cross fitting	3	1500 CF2065	1500 CF4065	1500 CF6065	1500 CF8065	1500 CF12065
Transposition clockwise 12"	1	1500 WS2074	1500 WS4074	1500 WS6074	1500 WS8074	--
Transposition counterclockwise 12"	1	1500 KS2075	1500 KS4075	1500 KS6075	1500 KS8075	--
Transposition clockwise 90° elbow	1	1500 WE2076	1500 WE4076	1500 WE6076	1500 WE8076	--
Transposition counterclockwise 90° elbow	1	1500 KE2077	1500 KE4077	1500 KE6077	1500 KE8077	--
Reducer 4"X4" to 2 1/2"X2 1/2"	0	--	1500 RD4402	--	--	--
Reducer 6"X6" to 4"X4"	0	--	--	1500 RD6604	--	--
Reducer 8"X8" to 6"X6"	0	--	--	--	1500 RD8806	--
Reducer 12"X6" to 4"X4"	0	--	--	--	--	1500 RD121204
Reducer 12"X6" to 6"X6"	0	--	--	--	--	1500 RD121206
Drop hanger	0	1500 DH2068	1500 DH4068	1500 DH6068	1500 DH8068	1500 DH12068
Bracket hanger	0	1500 BH2069	1500 BH4069	1500 BH6069	1500 BH8069	1500 BH12069
Joiner (Coupling)	0	1500 JP2071	1500 JP4071	1500 JP6071	1500 JP8071	1500 JP12071
Half joiner plate	0	1500 HP2078	1500 HP4078	1500 HP6078	1500 HP8078	1500 HP12078
Closing plate	Incorporated	1500 CP2070	1500 CP4070	1500 CP6070	1500 CP8070	1500 CP12070
Box connector	Incorporated	1500 BC2067	1500 BC4067	1500 BC6067	1500 BC8067	1500 BC12067
Flanges	0	1500 FL2073	1500 FL4073	1500 FL6073	1500 FL8073	1500 FL12073



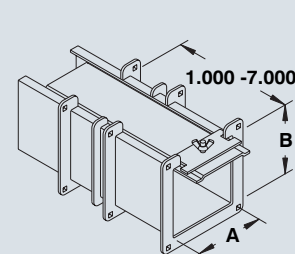
Barriers



Straight sections

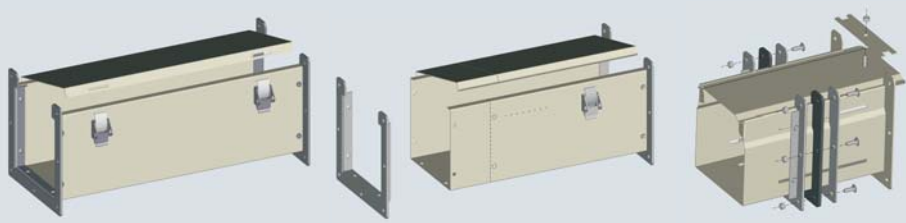


Cut off fittings



Telescope fittings

CATALOG NUMBER	DIMENSIONS A
1500 BA4060	3.000
1500 BA6060	4.500
1500 BA8060	6.000



Data subject to change without notice.

### Quick Features :

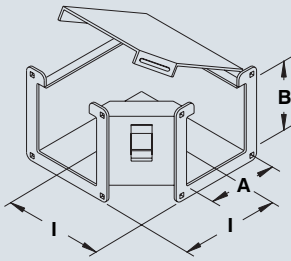
- Seamless welding
- Poured gasket
- Draw pull catches
- Complete system
- Easy installation
- Powder coating



Visit [www.eurobex.com](http://www.eurobex.com) for details.

Call us toll free 1-800-363-2423

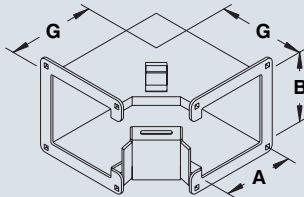
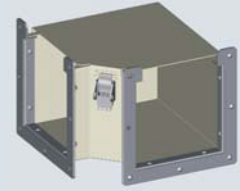
Data subject to change without notice.



### Elbow 90° top opening

CATALOG NUMBER	DIMENSIONS		
	A	B	I
1500 ET2090	2.500	2.500	4.250
1500 ET4090	4.000	4.000	5.000
1500 ET6090	6.000	6.000	6.000
1500 ET8090	8.000	8.000	7.000
1500 ET12090	12.000	6.000	9.000

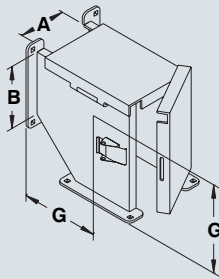
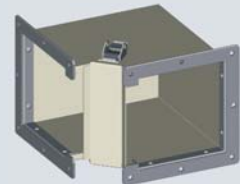
- Included :
- 1 Joiner plate
  - Joining gasket
  - Carriage bolts
  - Anti-vibration hardware
  - Assembled draw pull catch
  - Assembled bolted flanges



### Elbow 90° inside opening

CATALOG NUMBER	DIMENSIONS		
	A	B	G
1500 EI2091	2.500	2.500	4.250
1500 EI4091	4.000	4.000	5.000
1500 EI6091	6.000	6.000	6.000
1500 EI8091	8.000	8.000	7.000
1500 EI12091	12.000	6.000	6.000

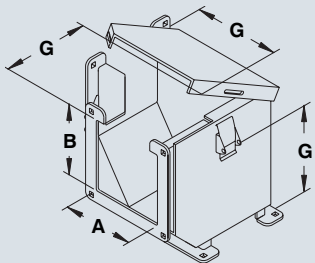
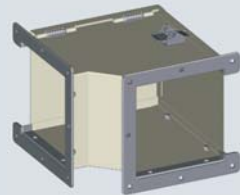
- Included :
- 1 Joiner plate
  - Joining gasket
  - Carriage bolts
  - Anti-vibration hardware
  - Assembled draw pull catch
  - Assembled bolted flanges



### Elbow 90° outside opening

CATALOG NUMBER	DIMENSIONS		
	A	B	G
1500 EO2092	2.500	2.500	4.250
1500 EO4092	4.000	4.000	5.000
1500 EO6092	6.000	6.000	6.000
1500 EO8092	8.000	8.000	7.000
1500 EO12092	12.000	6.000	6.000

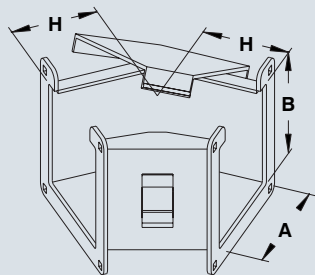
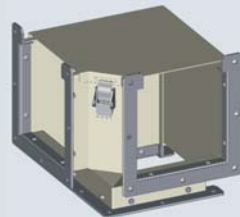
- Included :
- 1 Joiner plate
  - Joining gasket
  - Carriage bolts
  - Anti-vibration hardware
  - Assembled draw pull catch
  - Assembled bolted flanges



### Elbow 90° outside top opening

CATALOG NUMBER	DIMENSIONS		
	A	B	G
--	2.500	2.500	--
1500 OT4093	4.000	4.000	5.000
1500 OT6093	6.000	6.000	6.000
1500 OT8093	8.000	8.000	7.000
--	12.000	6.000	--

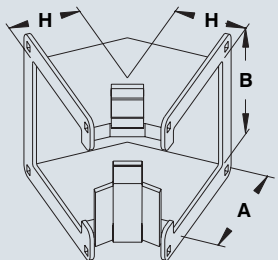
- Included :
- 1 Joiner plate
  - Joining gasket
  - Carriage bolts
  - Anti-vibration hardware
  - Assembled draw pull catch
  - Assembled bolted flanges



### Elbow 45° top opening

CATALOG NUMBER	DIMENSIONS		
	A	B	H
1500 ET2045	2.500	2.500	2.000
1500 ET4045	4.000	4.000	2.437
1500 ET6045	6.000	6.000	3.000
1500 ET8045	8.000	8.000	3.750
1500 ET12045	12.000	6.000	4.750

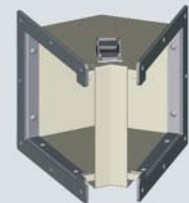
- Included :
- 1 Joiner plate
  - Joining gasket
  - Carriage bolts
  - Anti-vibration hardware
  - Assembled draw pull catch
  - Assembled bolted flanges



### Elbow 45° inside opening

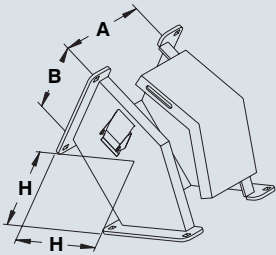
CATALOG NUMBER	DIMENSIONS		
	A	B	H
1500 EI2046	2.500	2.500	2.000
1500 EI4046	4.000	4.000	2.437
1500 EI6046	6.000	6.000	3.000
1500 EI8046	8.000	8.000	3.750
1500 EI12046	12.000	6.000	4.750

- Included :
- 1 Joiner plate
  - Joining gasket
  - Carriage bolts
  - Anti-vibration hardware
  - Assembled draw pull catch
  - Assembled bolted flanges



# NEMA 12-13 LAY-IN WIREWAY

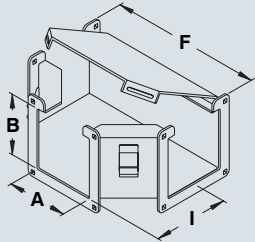
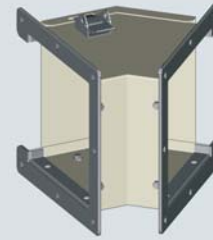
# 1500 DUCTS



## Elbow 45° outside opening

CATALOG NUMBER	DIMENSIONS		
	A	B	H
1500 EO2047	2.500	2.500	2.000
1500 EO4047	4.000	4.000	5.000
1500 EO6047	6.000	6.000	6.000
1500 EO8047	8.000	8.000	7.000
1500 EO12047	12.000	6.000	6.000

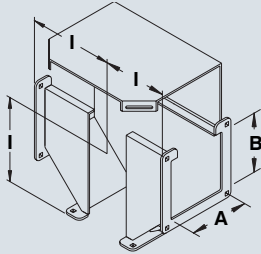
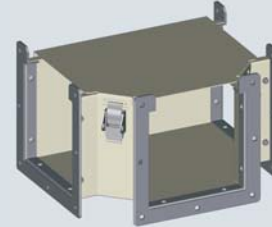
- Included :
- 1 Joiner plate
  - Joining gasket
  - Carriage bolts
  - Anti-vibration hardware
  - Assembled draw pull catch
  - Assembled bolted flanges



## Tee fitting top opening

CATALOG NUMBER	DIMENSIONS			
	A	B	F	I
1500 TT2063	2.500	2.500	8.500	4.250
1500 TT4063	4.000	4.000	10.000	5.000
1500 TT6063	6.000	6.000	12.000	6.000
1500 TT8063	8.000	8.000	14.000	7.000
1500 TT12063	12.000	6.000	18.000	9.000

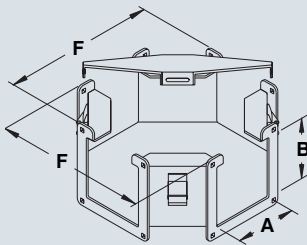
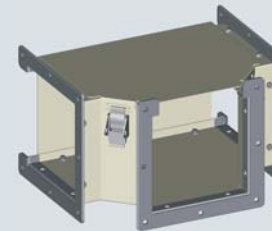
- Included :
- 2 Joiner plates
  - Joining gasket
  - Carriage bolts
  - Anti-vibration hardware
  - Assembled draw pull catch
  - Assembled bolted flanges



## Tee fitting outside opening

CATALOG NUMBER	DIMENSIONS		
	A	B	I
1500 TO2064	2.500	2.500	4.250
1500 TO4064	4.000	4.000	5.000
1500 TO6064	6.000	6.000	6.000
1500 TO8064	8.000	8.000	7.000
1500 TO12064	12.000	6.000	9.000

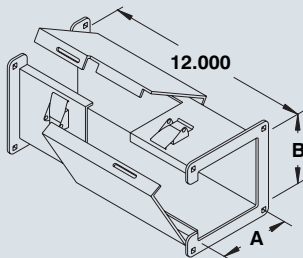
- Included :
- 2 Joiner plates
  - Joining gasket
  - Carriage bolts
  - Anti-vibration hardware
  - Assembled draw pull catch
  - Assembled bolted flanges



## Cross fitting

CATALOG NUMBER	DIMENSIONS		
	A	B	F
1500 CF2065	2.500	2.500	8.500
1500 CF4065	4.000	4.000	10.000
1500 CF6065	6.000	6.000	12.000
1500 CF8065	8.000	8.000	14.000
1500 CF12065	12.000	6.000	18.000

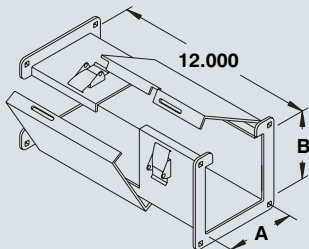
- Included :
- 3 Joiner plates
  - Joining gasket
  - Carriage bolts
  - Anti-vibration hardware
  - Assembled draw pull catch
  - Assembled bolted flanges



## Transposition clockwise 12°

CATALOG NUMBER	DIMENSIONS	
	A	B
1500 WS2074	2.500	2.500
1500 WS4074	4.000	4.000
1500 WS6074	6.000	6.000
1500 WS8074	8.000	8.000
--	12.000	6.000

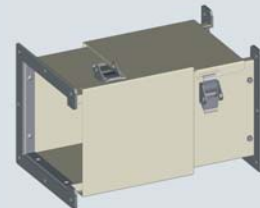
- Included :
- 1 Joiner plate
  - Joining gasket
  - Carriage bolts
  - Anti-vibration hardware
  - Assembled draw pull catch
  - Assembled bolted flanges



## Transposition counterclockwise 12°

CATALOG NUMBER	DIMENSIONS	
	A	B
1500 KS2075	2.500	2.500
1500 KS4075	4.000	4.000
1500 KS6075	6.000	6.000
1500 KS8075	8.000	8.000
--	12.000	6.000

- Included :
- 1 Joiner plate
  - Joining gasket
  - Carriage bolts
  - Anti-vibration hardware
  - Assembled draw pull catch
  - Assembled bolted flanges



Data subject to change without notice.

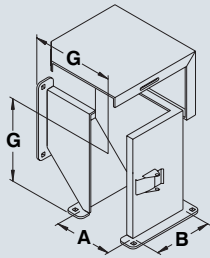
### Quick Features :

- Seamless welding
- Poured gasket
- Draw pull catches
- Complete system
- Easy installation
- Powder coating



Visit [www.eurobex.com](http://www.eurobex.com) for details.

Call us toll free 1-800-363-2423

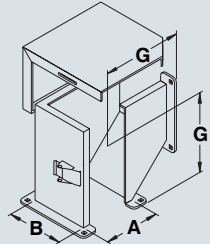
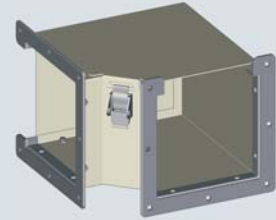


### Transposition clockwise 90° elbow

CATALOG NUMBER	DIMENSIONS		
	A	B	G
1500 WE2076	2.500	2.500	4.250
1500 WE4076	4.000	4.000	5.000
1500 WE6076	6.000	6.000	6.000
1500 WE8076	8.000	8.000	7.000
--	12.000	6.000	--

#### Included :

- 1 Joiner plate
- Joining gasket
- Carriage bolts
- Anti-vibration hardware
- Assembled draw pull catch
- Assembled bolted flanges

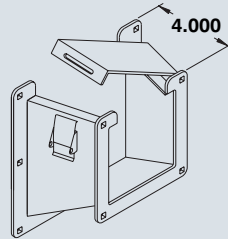
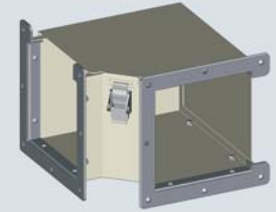


### Transposition counterclockwise 90° elbow

CATALOG NUMBER	DIMENSIONS		
	A	B	G
1500 KE2077	2.500	2.500	4.250
1500 KE4077	4.000	4.000	5.000
1500 KE6077	6.000	6.000	6.000
1500 KE8077	8.000	8.000	7.000
--	12.000	6.000	--

#### Included :

- 1 Joiner plate
- Joining gasket
- Carriage bolts
- Anti-vibration hardware
- Assembled draw pull catch
- Assembled bolted flanges

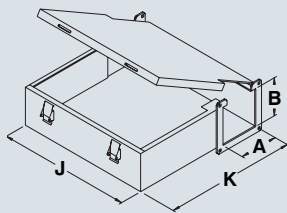
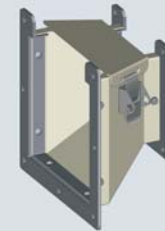


### Reducer

CATALOG NUMBER	DIMENSIONS
	SIZES
1500 RD4402	4"X4" to 2½"X2½"
1500 RD6604	6"X6" to 4"X4"
1500 RD8806	8"X8" to 6"X6"
1500 RD121204	12"X6" to 4"X4"
1500 RD121206	12"X6" to 6"X6"

#### Included :

- 1 Joiner plate
- Joining gasket
- Carriage bolts
- Anti-vibration hardware
- Assembled draw pull catch
- Assembled bolted flanges

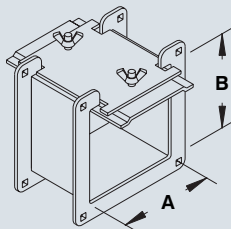
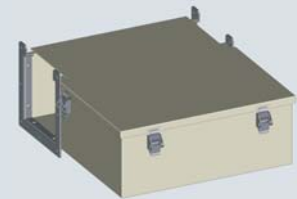


### Junction Box

CATALOG NUMBER	DIMENSIONS			
	A	B	J	K
1500 JB2066	2.500	2.500	12.000	4.250
1500 JB4066	4.000	4.000	14.000	5.000
1500 JB6066	6.000	6.000	16.000	6.000
1500 JB8066	8.000	8.000	18.000	7.000
1500 JB12066	12.000	6.000	--	--

#### Included :

- 1 Joiner plate
- Joining gasket
- Carriage bolts
- Anti-vibration hardware
- Assembled draw pull catch
- Assembled bolted flanges

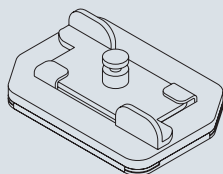


### Nipple

DIMENSIONS		LENGHT		
A	B	1"	2"	3"
2.500	2.500	1500 NS2001	1500 NS2002	1500 NS2003
4.000	4.000	1500 NS4001	1500 NS4002	1500 NS4003
6.000	6.000	1500 NS6001	1500 NS6002	1500 NS6003
8.000	8.000	1500 NS8001	1500 NS8002	1500 NS8003
12.000	6.000	1500 NS12001	1500 NS12002	1500 NS12003

#### Note :

Joiner plates are included with most components. Additional joiner plates must be ordered separately. All required hardware included.

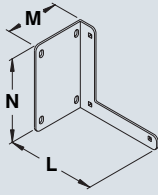


### Joiner plate

CATALOG NUMBER	DIMENSIONS	
	A	B
1500 JP2071	2.500	2.500
1500 JP4071	4.000	4.000
1500 JP6071	6.000	6.000
1500 JP8071	8.000	8.000
1500 JP12071	12.000	6.000



## Bracket hanger



CATALOG NUMBER	DIMENSIONS		
	M	N	L
1500 BH2069	3.625	3.875	4.625
1500 BH4069	3.625	5.375	6.125
1500 BH6069	3.625	7.625	8.250
1500 BH8069	3.625	9.625	10.250
1500 BH12069	--	--	--

**Note :**  
Bracket hangers are usually used to attach wireway runs to a wall, floor or ceiling. If your application requires overhead beam mounting see hanger below.



## Drop hanger

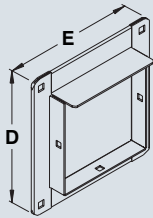


CATALOG NUMBER	DIMENSIONS			
	A	B	O	P
1500 DH2068	2.500	2.500	9.250	4.500
1500 DH4068	4.000	4.000	11.750	6.000
1500 DH6068	6.000	6.000	15.520	8.125
1500 DH8068	8.000	8.000	20.562	12.125
1500 DH12068	12.000	6.000	--	--

**Note :**  
Drop hangers are usually used to attach wireway runs to an overhead beam or to a ceiling. If you require wall or floor mounting, see hanger above.



## Closing plate

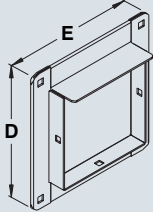


CATALOG NUMBER	DIMENSIONS			
	A	B	D	E
1500 CP2070	2.500	2.500	3.875	3.875
1500 CP4070	4.000	4.000	5.375	5.375
1500 CP6070	6.000	6.000	7.625	7.625
1500 CP8070	8.000	8.000	9.625	9.625
1500 CP12070	12.000	6.000	7.625	13.625

**Note :**  
These gasketed closing plates are installed after all wires are in place to ensure a complete seal of the wireway system.

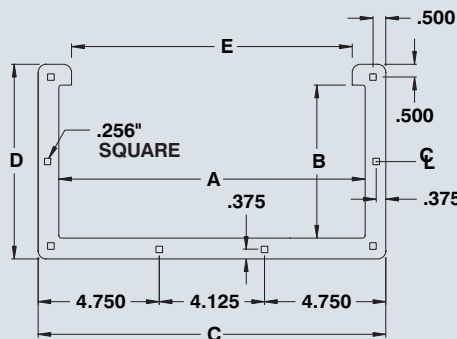
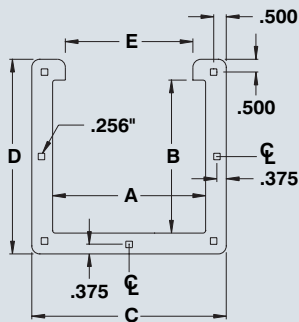
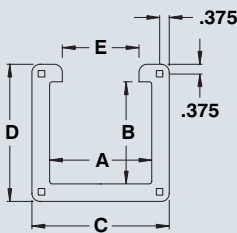


## Box connector



CATALOG NUMBER	DIMENSIONS			
	A	B	D	E
1500 BC2067	2.500	2.500	3.875	3.875
1500 BC4067	4.000	4.000	5.375	5.375
1500 BC6067	6.000	6.000	7.625	7.625
1500 BC8067	8.000	8.000	9.625	9.625
1500 BC12067	12.000	6.000	7.625	13.625

**Note :**  
These gasket box connectors should be used in conjunction with Eurobex NEMA 12-13 enclosures to ensure a complete seal of the system.



CATALOG NUMBER	DIMENSIONS					NOTES
	A	B	C	D	E	
1500 FL2073	2.500	2.500	3.875	3.875	1.500	See Figure - 1
1500 FL4073	4.000	4.000	5.375	5.375	3.000	See Figure - 1
1500 FL6073	6.000	6.000	7.625	7.625	5.000	See Figure - 2
1500 FL8073	8.000	8.000	9.625	9.625	7.000	See Figure - 2
1500 FL12073	12.000	6.000	13.625	7.625	7.625	See Figure - 3

For NEMA 12-13 wireway accessories, including flexible fittings and swivel nipples, please see page 280.

Data subject to change without notice.