

NEMA 4-12 PULL THROUGH WIREWAY 1412

Watertight pull through wireway

- Quick Features :**
- Seamless welding
 - Poured gasket
 - ¼ turn locks
 - Complete system
 - Flexible fitting available
 - Powder coating

Visit www.jimdgray.com for details.

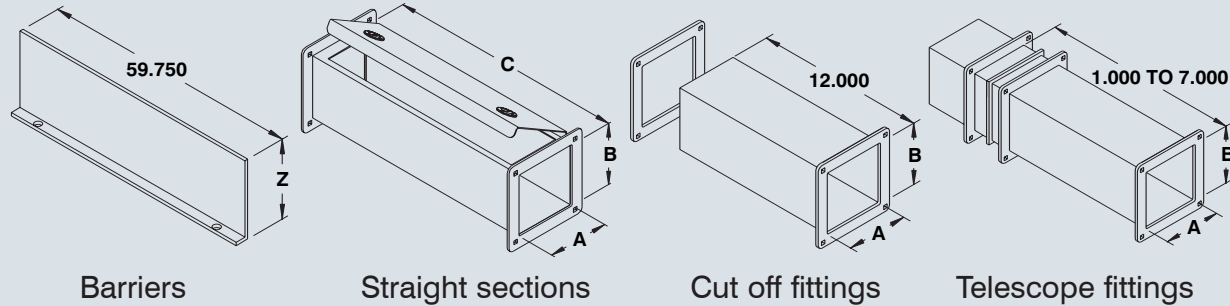
Call us 1-972-699-9976

The 1412 series is a complete water tight wireway system which is used indoor or outdoors, in areas where the wireway may be subjected to hosing or to water coming from any direction. The troughs are screw-on and are made of 14 GA steel with welded

end flanges. All seams have been continuously welded. Cover are hinged and tight closing is assured by several quick release ¼ turn locks. A high quality seamless poured in place gasket is installed between the door and the trough and between

the sections and the accessories to ensure integrity. Components are finished with heat fused polyester powder, electrostatically applied on a phosphatized base. Finish is ANSI/ASA 61 gray. **NEMA 4-12 / IP66**

| DESCRIPTION | CATALOG NUMBER | | | |
|---------------------------------|----------------|--------------|--------------|--------------|
| | 2½" X 2½" | 4" X 4" | 6" X 6" | 8" X 8" |
| Straight sections 6" | 1412 SS2006 | 1412 SS4006 | 1412 SS6006 | 1412 SS8006 |
| Straight sections 12" | 1412 SS2012 | 1412 SS4012 | 1412 SS6012 | 1412 SS8012 |
| Straight sections 24" | 1412 SS2024 | 1412 SS4024 | 1412 SS6024 | 1412 SS8024 |
| Straight sections 36" | 1412 SS2036 | 1412 SS4036 | 1412 SS6036 | 1412 SS8036 |
| Straight sections 48" | 1412 SS2048 | 1412 SS4048 | 1412 SS6048 | 1412 SS8048 |
| Straight sections 60" | 1412 SS2060 | 1412 SS4060 | 1412 SS6060 | 1412 SS8060 |
| Straight sections 120" | 1412 SS2120 | 1412 SS4120 | 1412 SS6120 | 1412 SS8120 |
| Screw on barrier 60" | -- | 1412 BA4060 | 1412 BA6060 | 1412 BA8060 |
| Cut off fitting | 1412 CO2062 | 1412 CO4062 | 1412 CO6062 | 1412 CO8062 |
| Nipple 1" | 1412 NS2001 | 1412 NS4001 | 1412 NS6001 | 1412 NS8001 |
| Nipple 2" | 1412 NS2002 | 1412 NS4002 | 1412 NS6002 | 1412 NS8002 |
| Nipple 3" | 1412 NS2003 | 1412 NS4003 | 1412 NS6003 | 1412 NS8003 |
| Swivel nipple | 1412 SN2002 | 1412 SN4002 | 1412 SN6002 | 1412 SN8002 |
| Flexible fitting | 1412 FF2003 | 1412 FF4003 | 1412 FF6003 | 1412 FF8003 |
| Telescope fitting | 1412 TL2068 | 1412 TL4068 | 1412 TL6068 | 1412 TL8068 |
| Elbow 90° | 1412 EL2090 | 1412 EL4090 | 1412 EL6090 | 1412 EL8090 |
| Elbow 45° | 1412 EL2045 | 1412 EL4045 | 1412 EL6045 | 1412 EL8045 |
| Elbow 22½° | 1412 EL2022 | 1412 EL4022 | 1412 EL6022 | 1412 EL8022 |
| Tee fitting | 1412 TT2063 | 1412 TT4063 | 1412 TT6063 | 1412 TT8063 |
| Cross fitting | 1412 CF2065 | 1412 CF4065 | 1412 CF6065 | 1412 CF8065 |
| Center reducer 4"X4" to 2½"X2½" | -- | 1412 RDC4402 | -- | -- |
| Center reducer 6"X6" to 4"X4" | -- | -- | 1412 RDC6604 | -- |
| Center reducer 8"X8" to 6"X6" | -- | -- | -- | 1412 RDC8806 |
| Edge reducer 4"X4" to 2½"X2½" | -- | 1412 RDE4402 | -- | -- |
| Edge reducer 6"X6" to 4"X4" | -- | -- | 1412 RDE6604 | -- |
| Edge reducer 8"X8" to 6"X6" | -- | -- | -- | 1412 RDE8806 |
| Drop hanger | 1500 DH2068 | 1500 DH4068 | 1500 DH6068 | 1500 DH8068 |
| Bracket hanger | 1500 BH2069 | 1500 BH4069 | 1500 BH6069 | 1500 BH8069 |
| Closing plate | 1412 CP2070 | 1412 CP4070 | 1412 CP6070 | 1412 CP8070 |
| Box connector | 1412 BC2067 | 1412 BC4067 | 1412 BC6067 | 1412 BC8067 |



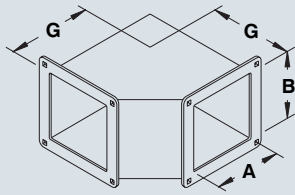
| CATALOG NUMBER | DIMENSIONS Z |
|----------------|--------------|
| 1412 BA4060 | 3.000 |
| 1412 BA6060 | 4.500 |
| 1412 BA8060 | 6.000 |



Data subject to change without notice.

NEMA 4-12 PULL THROUGH WIREWAY 1412

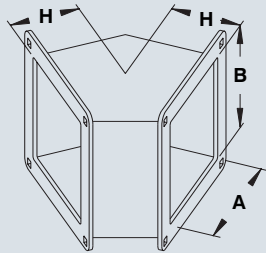
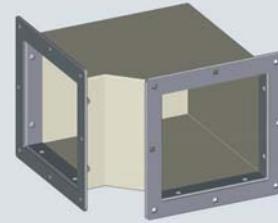
1412



Elbow 90°

| CATALOG NUMBER | DIMENSIONS | | |
|----------------|------------|-------|-------|
| | A | B | G |
| 1412 EL2090 | 2.500 | 2.500 | 4.250 |
| 1412 EL4090 | 4.000 | 4.000 | 5.000 |
| 1412 EL6090 | 6.000 | 6.000 | 6.000 |
| 1412 EL8090 | 8.000 | 8.000 | 7.000 |

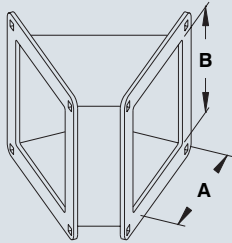
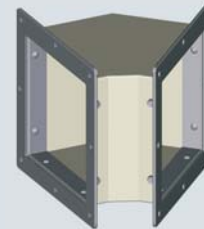
- Features :
- Joining gasket
 - Carriage bolts
 - Anti-vibration hardware
 - Welded flanges
 - Seamless welding
 - Powder coating



Elbow 45°

| CATALOG NUMBER | DIMENSIONS | | |
|----------------|------------|-------|-------|
| | A | B | H |
| 1412 EL2045 | 2.500 | 2.500 | 2.000 |
| 1412 EL4045 | 4.000 | 4.000 | 2.437 |
| 1412 EL6045 | 6.000 | 6.000 | 3.000 |
| 1412 EL8045 | 8.000 | 8.000 | 3.750 |

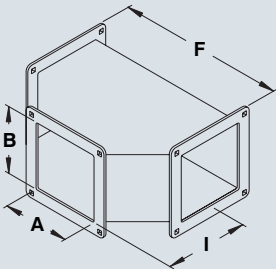
- Features :
- Joining gasket
 - Carriage bolts
 - Anti-vibration hardware
 - Welded flanges
 - Seamless welding
 - Powder coating



Elbow 22½°

| CATALOG NUMBER | DIMENSIONS | |
|----------------|------------|-------|
| | A | B |
| 1412 EL2022 | 2.500 | 2.500 |
| 1412 EL4022 | 4.000 | 4.000 |
| 1412 EL6022 | 6.000 | 6.000 |
| 1412 EL8022 | 8.000 | 8.000 |

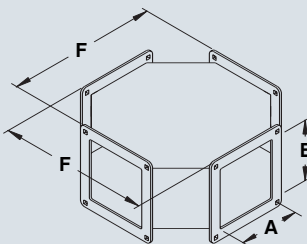
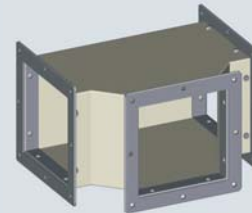
- Features :
- Joining gasket
 - Carriage bolts
 - Anti-vibration hardware
 - Welded flanges
 - Seamless welding
 - Powder coating



Tee fitting

| CATALOG NUMBER | DIMENSIONS | | | |
|----------------|------------|-------|--------|-------|
| | A | B | F | I |
| 1412 TT2063 | 2.500 | 2.500 | 8.500 | 4.250 |
| 1412 TT4063 | 4.000 | 4.000 | 10.000 | 5.000 |
| 1412 TT6063 | 6.000 | 6.000 | 12.000 | 6.000 |
| 1412 TT8063 | 8.000 | 8.000 | 14.000 | 7.000 |

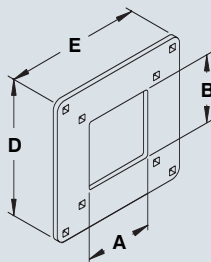
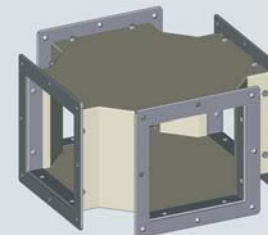
- Features :
- Joining gasket
 - Carriage bolts
 - Anti-vibration hardware
 - Welded flanges
 - Seamless welding
 - Powder coating



Cross fitting

| CATALOG NUMBER | DIMENSIONS | | |
|----------------|------------|-------|--------|
| | A | B | F |
| 1412 CF2065 | 2.500 | 2.500 | 8.500 |
| 1412 CF4065 | 4.000 | 4.000 | 10.000 |
| 1412 CF6065 | 6.000 | 6.000 | 12.000 |
| 1412 CF8065 | 8.000 | 8.000 | 14.000 |

- Features :
- Joining gasket
 - Carriage bolts
 - Anti-vibration hardware
 - Welded flanges
 - Seamless welding
 - Powder coating



Reducer - Center hole

| CATALOG NUMBER | DIMENSIONS | | | |
|----------------|------------|-------|-------|-------|
| | A | B | D | E |
| 1412 RDC4402 | 2.500 | 2.500 | 4.000 | 4.000 |
| 1412 RDC6604 | 4.000 | 4.000 | 6.000 | 6.000 |
| 1412 RDC8806 | 6.000 | 6.000 | 8.000 | 8.000 |

- Features :
- Joining gasket
 - Carriage bolts
 - Anti-vibration hardware
 - Reducer with edge hole is also available, see model number 1412 RDE.

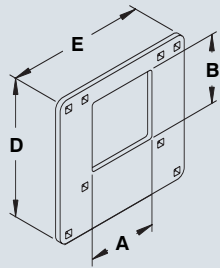


Data subject to change without notice.

- Quick Features :**
- Seamless welding
 - Poured gasket
 - ¼ turn locks
 - Complete system
 - Flexible fitting available
 - Powder coating

Visit www.eurobex.com for details.

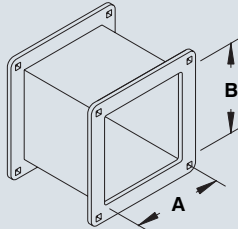
Call us toll free 1-800-363-2423



Reducer - Edge hole

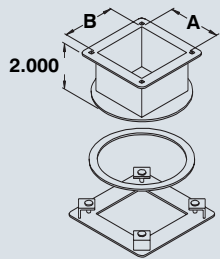
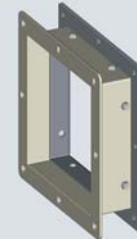
| CATALOG NUMBER | DIMENSIONS | | | |
|----------------|------------|-------|-------|-------|
| | A | B | D | E |
| 1412 RDE4402 | 2.500 | 2.500 | 4.000 | 4.000 |
| 1412 RDE6604 | 4.000 | 4.000 | 6.000 | 6.000 |
| 1412 RDE8806 | 6.000 | 6.000 | 8.000 | 8.000 |

- Features :**
- Joining gasket
 - Carriage bolts
 - Anti-vibration hardware
 - Reducer with center hole is also available, see model 1412 RDC.



Nipple (1", 2" and 3")

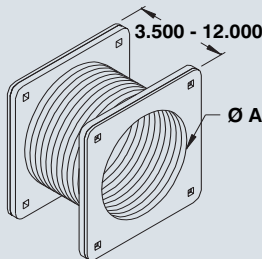
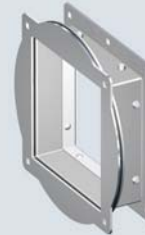
| DIMENSIONS | | LENGHT | | |
|------------|-------|-------------|-------------|-------------|
| A | B | 1" | 2" | 3" |
| 2.500 | 2.500 | 1412 NS2001 | 1412 NS2002 | 1412 NS2003 |
| 4.000 | 4.000 | 1412 NS4001 | 1412 NS4002 | 1412 NS4003 |
| 6.000 | 6.000 | 1412 NS6001 | 1412 NS6002 | 1412 NS6003 |
| 8.000 | 8.000 | 1412 NS8001 | 1412 NS8002 | 1412 NS8003 |



Swivel nipple (2")

| CATALOG NUMBER | DIMENSIONS | |
|----------------|------------|-------|
| | A | B |
| 1412 SN2002 | 2.500 | 2.500 |
| 1412 SN4002 | 4.000 | 4.000 |
| 1412 SN6002 | 6.000 | 6.000 |
| 1412 SN8002 | 8.000 | 8.000 |

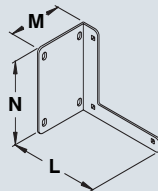
- Features :**
- Joining gasket
 - Carriage bolts
 - Anti-vibration hardware
 - Powder coating



Flexible fitting

| CATALOG NUMBER | DIMENSIONS |
|----------------|------------|
| | A |
| 1412 FF2003 | 2.500 |
| 1412 FF4003 | 4.000 |
| 1412 FF6003 | 6.000 |
| 1412 FF8003 | 8.000 |

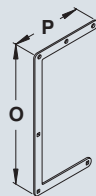
- Features :**
- Joining gasket
 - Carriage bolts
 - Anti-vibration hardware



Bracket hanger

| CATALOG NUMBER | DIMENSIONS | | |
|----------------|------------|-------|--------|
| | M | N | L |
| 1500 BH2069 | 3.625 | 3.875 | 4.625 |
| 1500 BH4069 | 3.625 | 5.375 | 6.125 |
| 1500 BH6069 | 3.625 | 7.625 | 8.250 |
| 1500 BH8069 | 3.625 | 9.625 | 10.250 |

Note :
Bracket hangers are used to attach wireway runs to a wall, floor or ceiling. If you require overhead beam mounting see hanger below.



Drop hanger

| CATALOG NUMBER | DIMENSIONS | | | |
|----------------|------------|-------|--------|--------|
| | A | B | O | P |
| 1500 DH2068 | 2.500 | 2.500 | 9.250 | 4.500 |
| 1500 DH4068 | 4.000 | 4.000 | 11.750 | 6.000 |
| 1500 DH6068 | 6.000 | 6.000 | 15.520 | 8.125 |
| 1500 DH8068 | 8.000 | 8.000 | 20.562 | 12.125 |

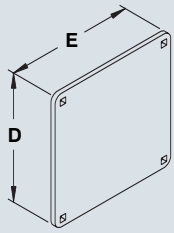
Note :
Drop hangers are used to attach wireway runs to an overhead beam. If you require wall or floor mounting, see hanger above.



Data subject to change without notice.

NEMA 4-12 PULL THROUGH WIREWAY

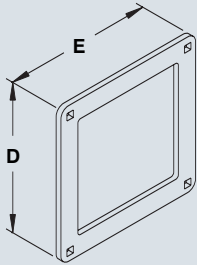
1412



Closing plate

| CATALOG NUMBER | DIMENSIONS | | | |
|----------------|------------|-------|-------|-------|
| | A | B | D | E |
| 1412 CP2070 | 2.500 | 2.500 | 3.875 | 3.875 |
| 1412 CP4070 | 4.000 | 4.000 | 5.375 | 5.375 |
| 1412 CP6070 | 6.000 | 6.000 | 7.625 | 7.625 |
| 1412 CP8070 | 8.000 | 8.000 | 9.625 | 9.625 |

Note :
These gasketed closing plates are installed after all wires are in place to ensure a complete seal of the wireway system.



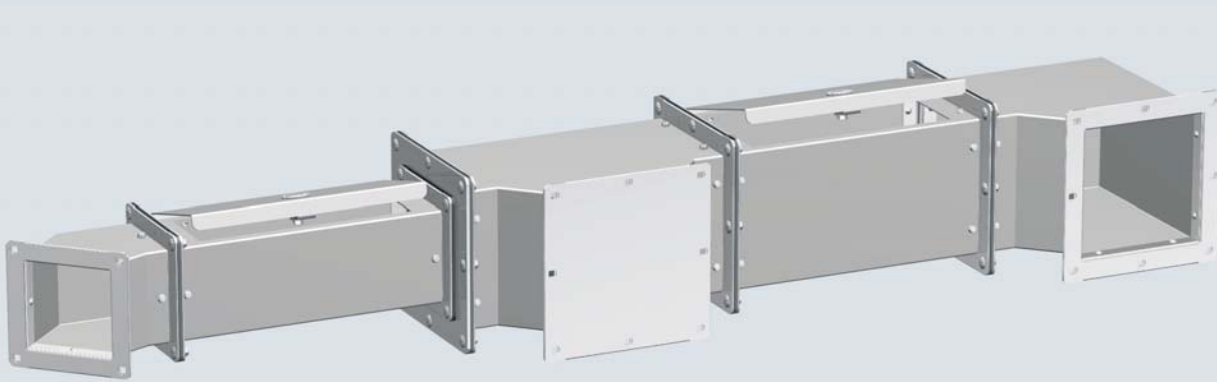
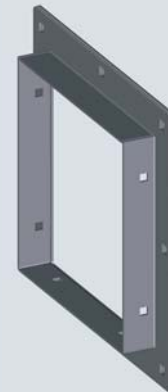
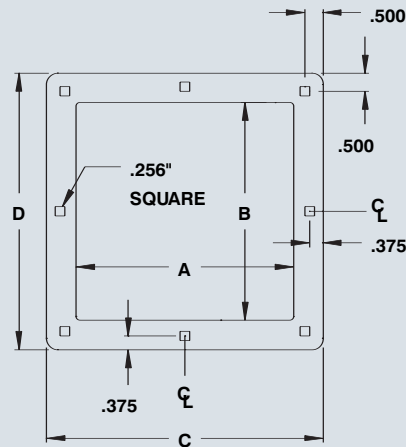
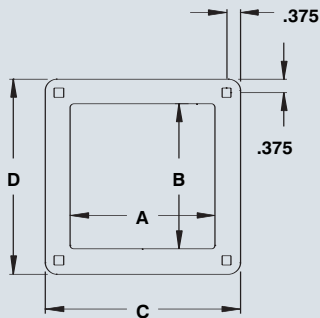
Box connector

| CATALOG NUMBER | DIMENSIONS | | | |
|----------------|------------|-------|-------|-------|
| | A | B | D | E |
| 1412 BC2067 | 2.500 | 2.500 | 3.875 | 3.875 |
| 1412 BC4067 | 4.000 | 4.000 | 5.375 | 5.375 |
| 1412 BC6067 | 6.000 | 6.000 | 7.625 | 7.625 |
| 1412 BC8067 | 8.000 | 8.000 | 9.625 | 9.625 |

Note :
These gasket box connectors should be used in conjunction with Eurobex NEMA 4 enclosures to ensure a complete seal of the system.



Flange detail



Data subject to change without notice.