

Ventilated enclosures

- Quick Features :**
- Two sides vented
 - Knockout provided
 - Powder coating

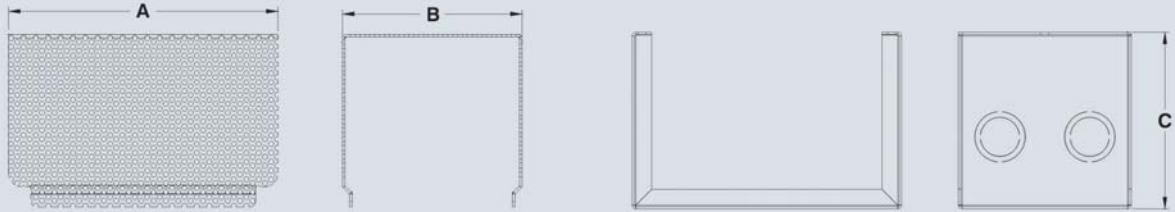
Visit www.jimgray.com for details.

Call us 1-972-699-9976

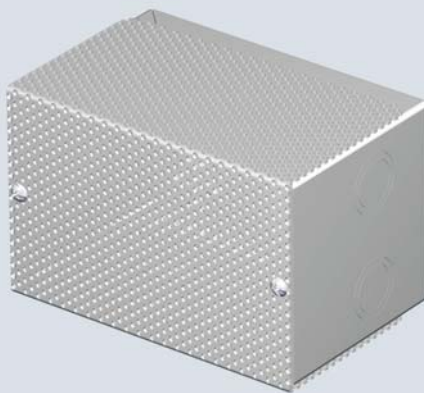
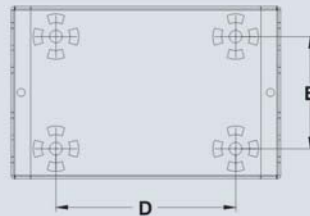
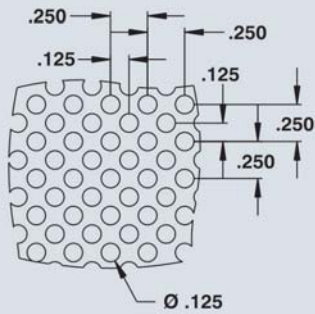
The 1100 VE ventilated enclosures are used for general purpose whenever the contents require ventilation. The enclosures are made of 16 GA steel. There are knockouts at the top

and bottom, and the two sides are fully vented. Enclosures are also available non-ventilated (add suffix "N" to catalog number). Mounting holes are provided in the back and the cover is fixed by

means of screws. Enclosures and panels are finished with heat fused polyester powder, electrostatically applied on a phosphatized base. Box is ANSI/ASA 61 gray (other colors available).



PERFORATION DETAIL



| CATALOG NUMBER | DIMENSIONS | | | | | SHIP WGT LBS. |
|----------------|------------|----|----|--------|-------|---------------|
| | A | B | C | D | E | |
| 1100 VE060404 | 6 | 4 | 4 | 4.000 | 2.500 | 2 |
| 1100 VE100404 | 10 | 4 | 4 | 7.000 | 2.500 | 3 |
| 1100 VE100606 | 10 | 6 | 6 | 7.000 | 4.500 | 4 |
| 1100 VE110707 | 11 | 7 | 7 | 8.000 | 5.500 | 6 |
| 1100 VE120808 | 12 | 8 | 8 | 9.000 | 6.500 | 7 |
| 1100 VE151008 | 15 | 10 | 8 | 12.000 | 8.500 | 10 |
| 1100 VE201008 | 20 | 10 | 8 | 17.000 | 8.500 | 12 |
| 1100 VE201010 | 20 | 10 | 10 | 17.000 | 8.500 | 14 |

* Enclosures are also available non-ventilated; add suffix 'N' to the catalog number.

Data subject to change without notice.

Suggested Accessories



p.368